

L. S. Barber

FBB XII-157-8
PROVIDENCE, R. I.

CITY ENGINEER'S OFFICE
STREET LINE DEPT.

Aug. 15, 1888

014176

Providence R. I.
This plat accompanies
our report of this date.

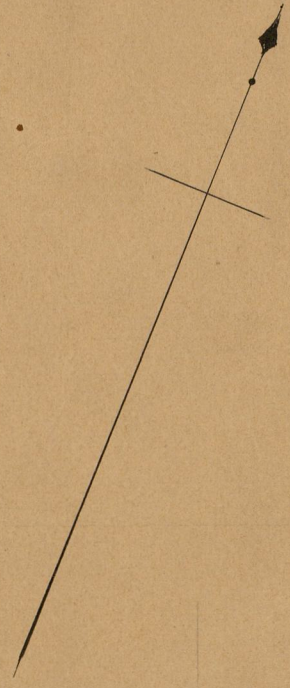
PLAT OF ATLANTIC STREET

FROM BROAD ST. TO HAMILTON ST.

SCALE 80 FEET PER INCH.

Changed to Atlantic Ave. May 25, 1891.

83
B-7



HAMILTON ST.

BROAD ST.

ATLANTIC STREET

ST.

NIAGARA

CA = 1210.06

DB = 1228.55

Granite bound on line of St.
DC-57100
90° 00'
50.0

William R. Randall

John H. Roberts

Allen T. Johnson,
Trustee

Charles S. Hubbard

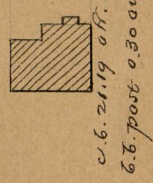
Joseph W. Padesford

Margaret B. Cheney
wife Edward S.

Stone bound on line of St.

c.b. post 0.35 on A. St.

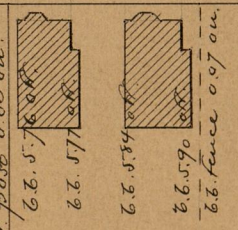
William Donaldson.



c.b. 2.119 of.
c.b. post 0.30 on.

Face picket 0.60 on.

James B. Arnold.



cot. post 0.03 on.
c.b. 5.76 of.
c.b. 5.77 of.
c.b. 5.84 of.
c.b. 5.90 of.
c.b. fence 0.07 on.

Mary M. Woodward,
wife of William.

Face picket 0.04 of.

c.b. 7.77 of.

c.b. 7.80 of A. St.

Allen T. Johnson Trustee

William H. Luther

Stone bound 0.02 of.

The Turnverein of
Providence, R.I.

Stone bound 0.01 of A. St.

William A. Fiske.

c.b. fence 0.23 of.

Markin V. B. Searle

c.b. 5.02 of.

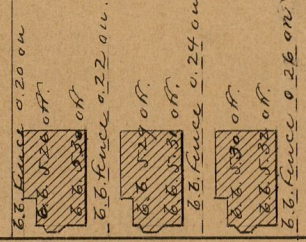
Markin V. B. Searle.

Eliza Swartz.

c.b. fence 0.26 on.

Francis M. Andrews.

Frederick A.
Brown.



c.b. fence 0.20 on.
c.b. fence 0.22 of.
c.b. fence 0.22 of.
c.b. fence 0.22 of.
c.b. fence 0.24 on.
c.b. fence 0.24 on.
c.b. fence 0.26 on.

Mary A. Soff,
wife of Dr. N.

50.0

69° 42'
BA = 53.30

OFFICE No. 9157
DRAWER 83
SHEET B

83
B-7

83
B-7

83
B-7